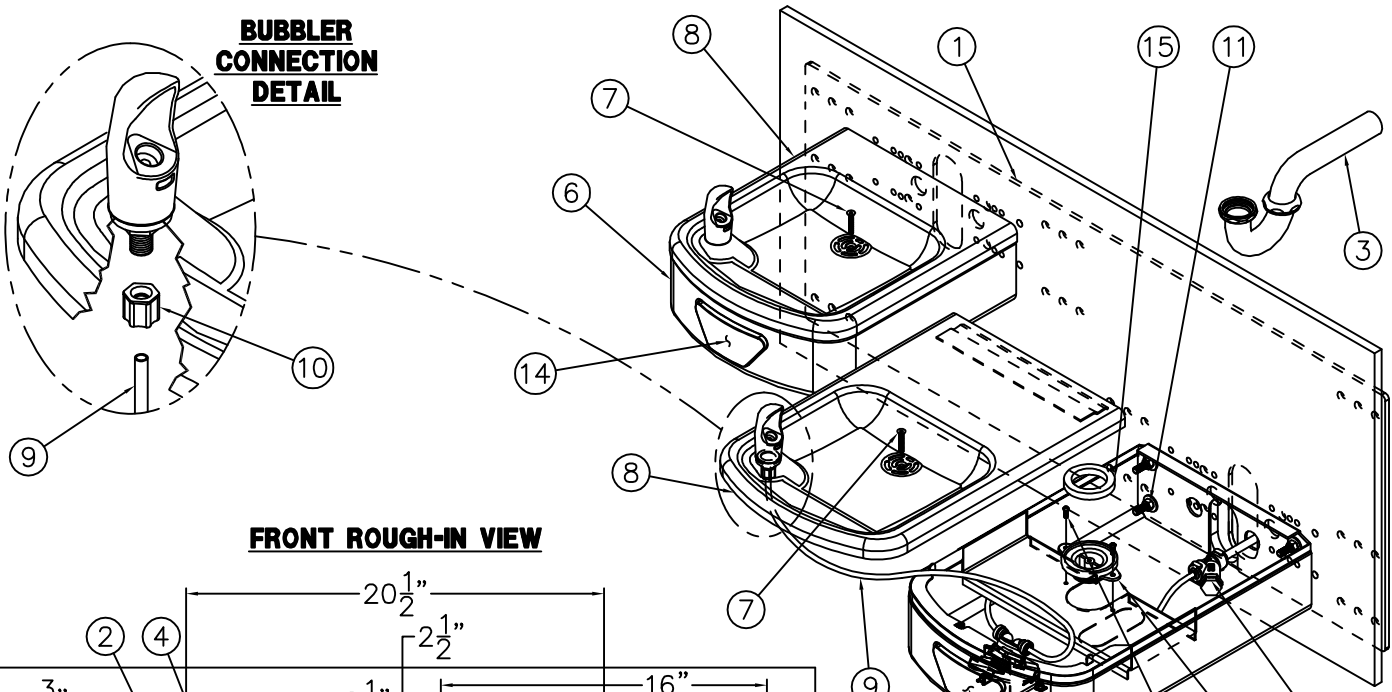
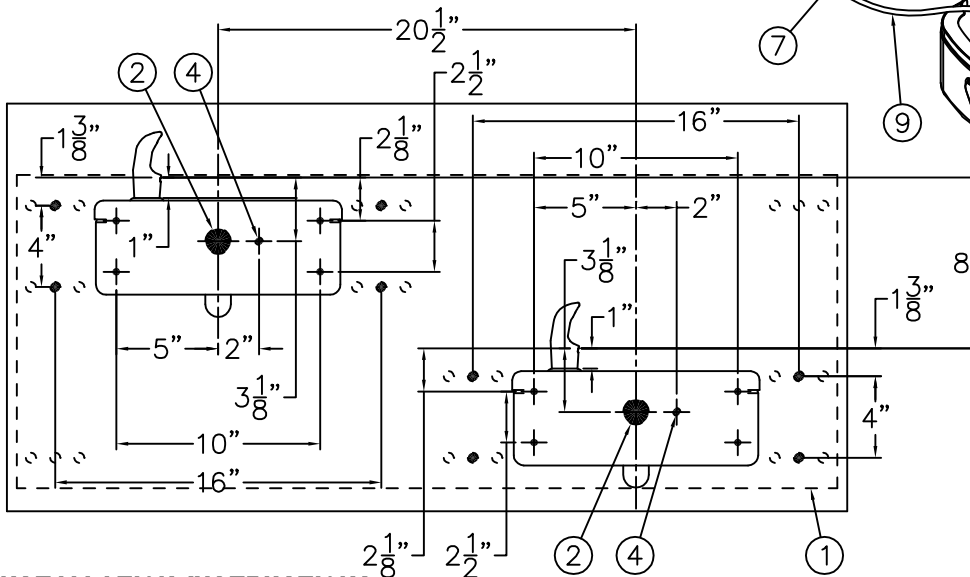


**BUBBLER CONNECTION DETAIL**



**FRONT ROUGH-IN VIEW**



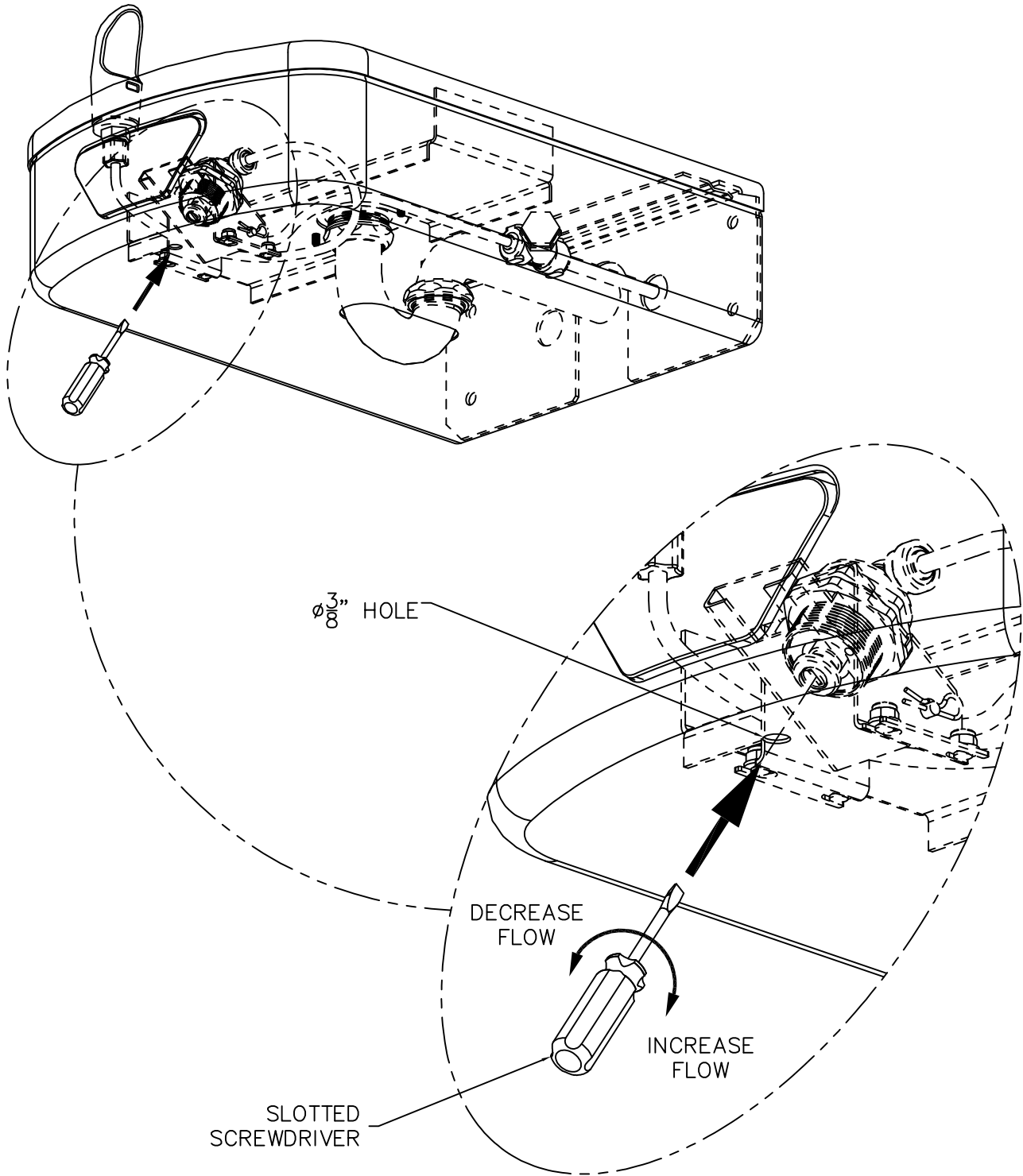
32 3/4" ORIFICE HEIGHT ABOVE FINISHED FLOOR FOR 27" ADA KNEE CLEARANCE. ADJUST AS REQUIRED.

**INSTALLATION INSTRUCTIONS:**

- A- REFER TO DRAWING # 9938-376-002 TO INSTALL STANDARD SUPPLIED WALL MOUNTING PLATE (1).
- B- ROUGH-IN WASTE OUTLETS (2) AT DIMENSIONS SHOWN FOR 1-1/4" OUTER DIAMETER PLAIN END P-TRAPS (3).
- C- ROUGH-IN WATER SUPPLIES (4) AT DIMENSIONS SHOWN FOR THE 1/4" NOMINAL (3/8" O.D.) x 4" LONG COPPER TUBES CONNECTED TO IN-LINE STRAINERS (5) PROVIDED. STOPS RECOMMENDED ON SUPPLIES TO BE SUPPLIED BY OTHERS.
- D- CAREFULLY REMOVE FIXTURES (6) AND COMPONENTS FROM THE PACKAGING PREVENTING SCRATCHING AND DAMAGE.
- E- REMOVE SCREWS (7). REMOVE FOUNTAIN TOPS (8) LIFTING AT THE FRONT & PULLING FORWARD. DISCONNECT TUBING (9) FROM BUBBLERS BY UNSCREWING FERRULE NUTS (10) AND SET TOPS (8) ASIDE WHERE THEY WILL NOT GET DAMAGED.
- F- SLIDE SPACERS, BACK PLATE AND UNITS OVER STUDS FROM MOUNTING PLATE & SECURE WITH NUTS AND WASHERS (11).
- G- ASSEMBLE P-TRAPS (3) TO DRAIN ADAPTERS (12). ASSEMBLE TO UNITS WITH PHILLIPS SCREWS (13). MAKE-UP 1-1/4" O.D. WASTE CONNECTIONS.
- H- FLUSH WATER SUPPLIES (4) BY OTHERS OF ALL DEBRIS PRIOR TO CONNECTING TO FIXTURE.
- I- CONNECT WATER SUPPLIES (4) BY OTHERS TO 1/4" NOMINAL COPPER TUBE INLETS. STOPS ON SUPPLIES RECOMMENDED.
- J- RE-ATTACH TUBING (9) TO BUBBLERS WITH FERRULE NUTS (10). TEST OPERATION OF BUBBLERS BY DEPRESSING BUTTONS (14). REFERENCE DRAWING # 9938-014-001 TO ADJUST FLOW RATE AS REQUIRED. CHECK ALL CONNECTIONS AND WASTE PIPING FOR LEAKS. CORRECT IF PRESENT.
- K- SET GASKETS (15) ON DRAIN ADAPTERS (12). RE-INSTALL TOPS (8) BY ENGAGING THE BACK CLIP AND SECURING WITH SCREWS (7).

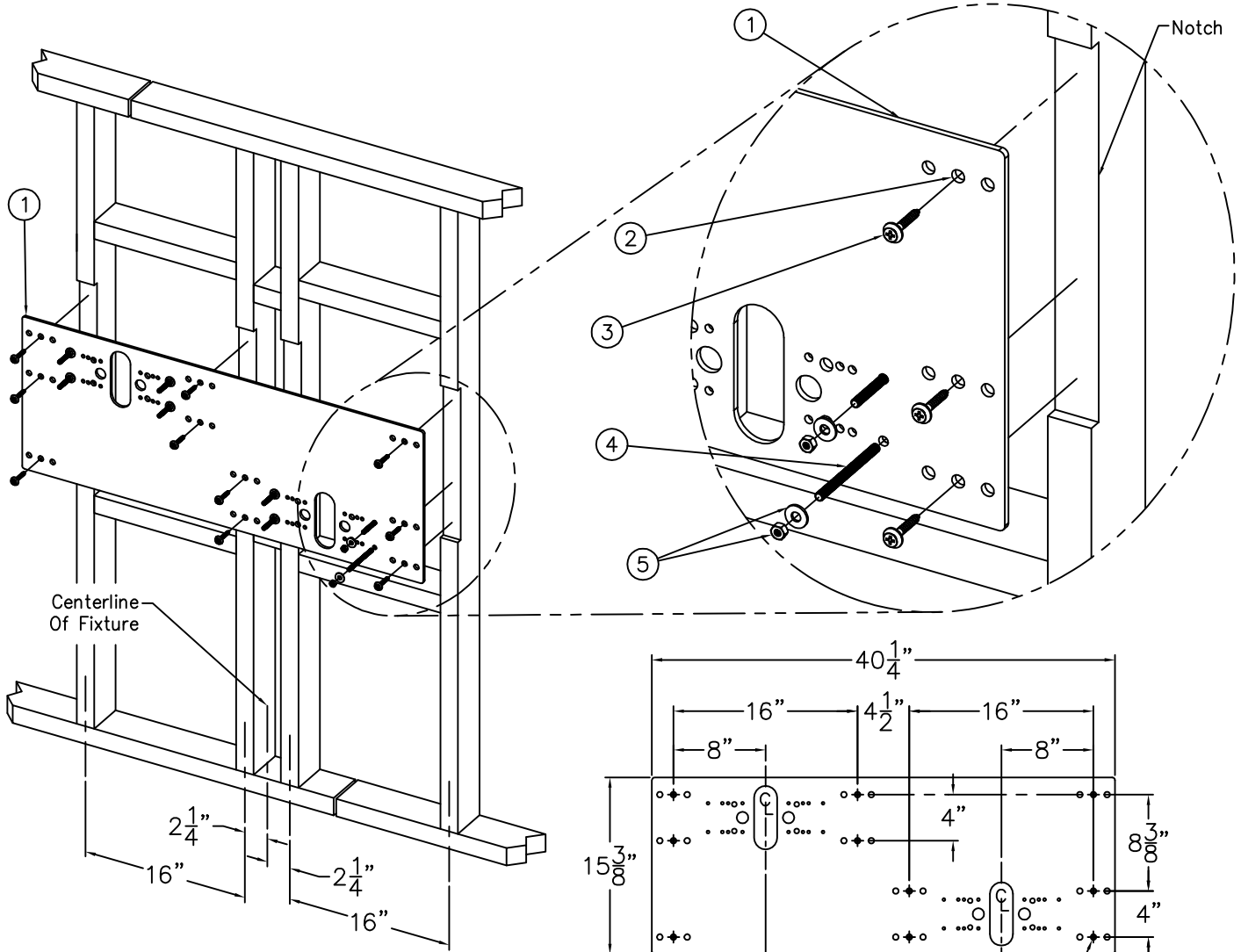
**ACORN AQUA**  
 P.O. Box 3527 City of Industry, CA 91744  
 Phone: (800) 591-9360 www.acornaqua.com

TITLE <b>OVAL BOX WALL MOUNTED BI-LEVEL DRINKING FOUNTAIN</b>		
MANUFACTURE DATE <b>JANUARY 2006 TO PRESENT</b>	DATE ISSUED <b>09/27/05</b>	DRAWING NUMBER <b>9938-012-001</b>
	DATE REVISED <b>10/11/06</b>	



ACORN  
Aqua™  
P.O. Box 3527 City of Industry, CA 91744  
Phone: (800) 591-9360 www.acornaqua.com

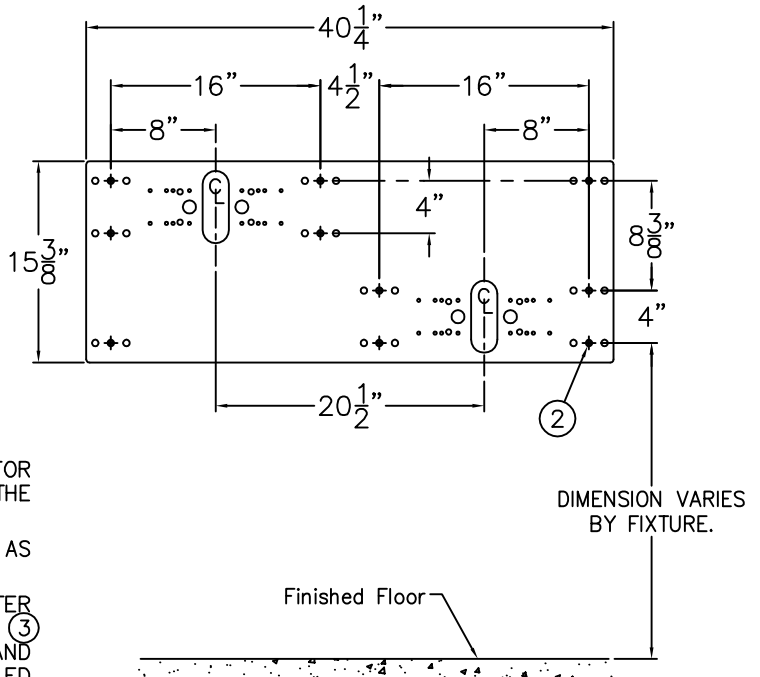
TITLE		
<b>18 GAGE OVAL BOX DRINKING FOUNTAIN FLOW RATE ADJUSTMENT</b>		
MANUFACTURE DATE	DATE ISSUED	DRAWING NUMBER
<b>JANUARY 2006</b>	<b>09/27/05</b>	<b>9938-014-001</b>
<b>TO PRESENT</b>	DATE REVISED	



**INSTALLATION INSTRUCTIONS:**

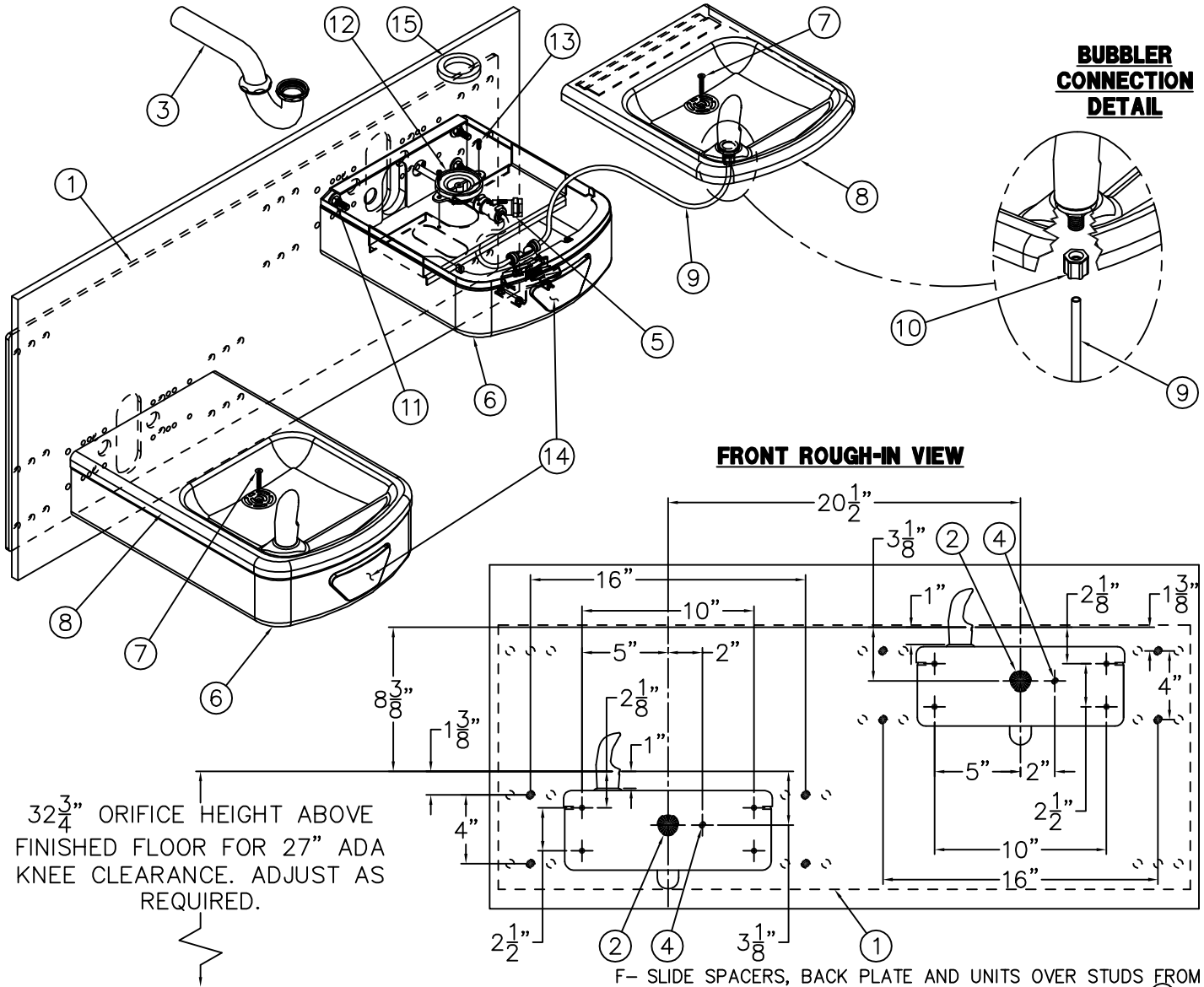
**NOTE:** THE STANDARD BI-LEVEL INSTALLATION IS SHOWN. FOR THE OPTIONAL -RBL REVERSE BI-LEVEL CONFIGURATION, THE INSTALLATION IS OPPOSITE TO THAT SHOWN.

- A- PROVIDE STRUCTURAL WALL SUPPORT AT THE 16" SPACING AS SHOWN FOR ANCHORING THE -MP2 MOUNTING PLATE ①.
- B- MOUNTING PLATE ① IS 1/4" THICK WITH 1/2" DIAMETER HOLES ② IN 30 PLACES FOR ANCHORING HARDWARE ③ BY OTHERS. NOTCH/PREPARE WALL SO THAT PLATE ① AND INSTALLER PROVIDED HARDWARE ③ WILL BE CONCEALED BEHIND THE WALL FINISHING MATERIAL.
- C- THREAD 5/16" ALL-THREAD STUDS ④ THRU PLATE ① SO THAT MINIMUM 1-1/4" OF STUD WILL PROTRUDE BEYOND THE FINISHED WALL FACE. REFERENCE FIXTURE ROUGH-INS FOR LOCATION.
- D- SECURELY ANCHOR PLATE ① TO WALL WITHIN NOTCHED AREA USING HARDWARE ③ BY OTHERS.



- E- MAKE APPROPRIATE SUPPLY AND WASTE ROUGH-INS THRU THE MOUNTING PLATE ①.
- F- COMPLETE INSTALLATION OF FINISHED WALL LEAVING STUDS ④ PROTRUDING AND ROUGH-INS ACCESSIBLE.
- G- SLIDE FIXTURE OVER STUDS ④ UP AGAINST FINISHED WALL AND SECURE WITH NUTS AND WASHERS ⑤. COMPLETE THE INSTALLATION REFERENCING THE FIXTURE INSTRUCTIONS.

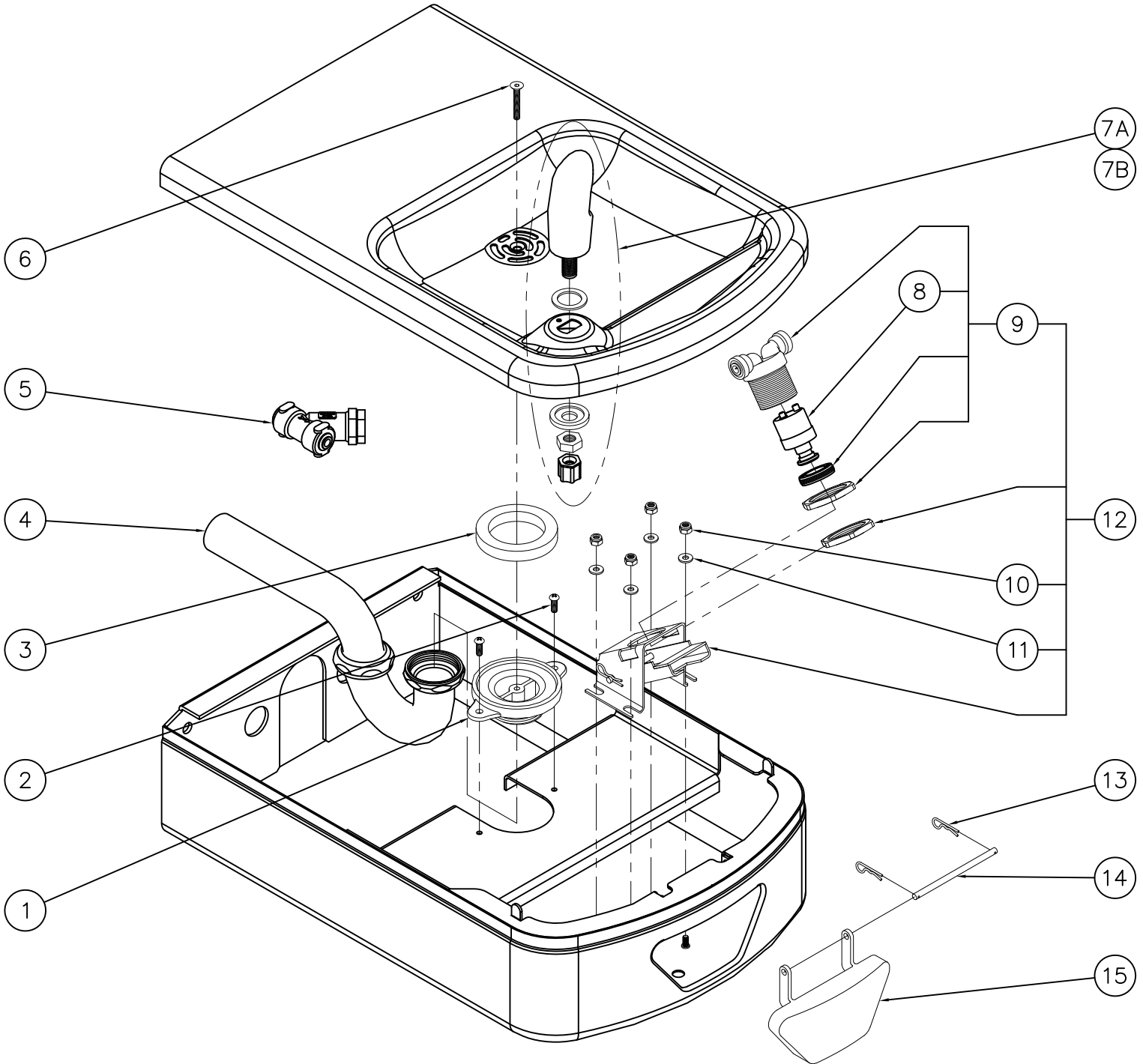
<p><b>ACORN AQUA</b> P.O. Box 3527 City of Industry, CA 91744 Phone: (800) 591-9360 www.acornaqua.com</p>	<p>TITLE <b>STANDARD -MP2 BI-LEVEL WALL MOUNTING PLATE AND HARDWARE</b></p>	
	<p>MANUFACTURE DATE <b>OCTOBER 2006 TO PRESENT</b></p>	<p>DATE ISSUED <b>10/11/06</b></p> <p>DATE REVISED</p>




**INSTALLATION INSTRUCTIONS:**

- A- REFER TO DRAWING # 9938-376-002 TO INSTALL STANDARD SUPPLIED WALL MOUNTING PLATE (1).
- B- ROUGH-IN WASTE OUTLETS (2) AT DIMENSIONS SHOWN FOR 1-1/4" OUTER DIAMETER PLAIN END P-TRAPS (3).
- C- ROUGH-IN WATER SUPPLIES (4) AT DIMENSIONS SHOWN FOR THE 1/4" NOMINAL (3/8" O.D.) x 4" LONG COPPER TUBES CONNECTED TO IN-LINE STRAINERS (5) PROVIDED. STOPS RECOMMENDED ON SUPPLIES TO BE SUPPLIED BY OTHERS.
- D- CAREFULLY REMOVE FIXTURES (6) AND COMPONENTS FROM THE PACKAGING PREVENTING SCRATCHING AND DAMAGE.
- E- REMOVE SCREWS (7). REMOVE FOUNTAIN TOPS (8) LIFTING AT THE FRONT & PULLING FORWARD. DISCONNECT TUBING (9) FROM BUBBLERS BY UNSCREWING FERRULE NUTS (10) AND SET TOPS (8) ASIDE WHERE THEY WILL NOT GET DAMAGED.
- F- SLIDE SPACERS, BACK PLATE AND UNITS OVER STUDS FROM MOUNTING PLATE & SECURE WITH NUTS AND WASHERS (11).
- G- ASSEMBLE P-TRAPS (3) TO DRAIN ADAPTERS (12). ASSEMBLE TO UNITS WITH PHILLIPS SCREWS (13). MAKE-UP 1-1/4" O.D. WASTE CONNECTIONS.
- H- FLUSH WATER SUPPLIES (4) BY OTHERS OF ALL DEBRIS PRIOR TO CONNECTING TO FIXTURE.
- I- CONNECT WATER SUPPLIES (4) BY OTHERS TO 1/4" NOMINAL COPPER TUBE INLETS. STOPS ON SUPPLIES RECOMMENDED.
- J- RE-ATTACH TUBING (9) TO BUBBLERS WITH FERRULE NUTS (10). TEST OPERATION OF BUBBLERS BY DEPRESSING BUTTONS (14). REFERENCE DRAWING # 9938-014-001 TO ADJUST FLOW RATE AS REQUIRED. CHECK ALL CONNECTIONS AND WASTE PIPING FOR LEAKS. CORRECT IF PRESENT.
- K- SET GASKETS (15) ON DRAIN ADAPTERS (12). RE-INSTALL TOPS (8) BY ENGAGING THE BACK CLIP AND SECURING WITH SCREWS (7).

<p><b>ACORN AQUA</b> P.O. Box 3527 City of Industry, CA 91744 Phone: (800) 591-9360 www.acornaqua.com</p>	<p>TITLE <b>-RBL OVAL BOX WALL MOUNTED REVERSE BI-LEVEL DRINKING FOUNTAIN</b></p>		
	<p>MANUFACTURE DATE</p> <p><b>JANUARY 2006</b></p> <p><b>TO PRESENT</b></p>	<p>DATE ISSUED</p> <p><b>09/27/05</b></p> <p>DATE REVISED</p> <p><b>10/20/06</b></p>	<p>DRAWING NUMBER</p> <p><b>9938-013-001</b></p>



1	7000-005-199	DRAIN ADAPTER	9	7000-050-001	VALVE ASSEMBLY
2	0116-016-000	PHILLIPS TRUSS HEAD SCREW	10	0308-009-000	NYLON INSERT LOCKNUT
3	7000-006-000	FLAT DRAIN ADAPTER GASKET	11	0331-004-000	FLAT WASHER
4	7000-015-000	1-1/4" OUTER DIAMETER P-TRAP	12	7001-008-001	VALVE ACTIVATION ASSEMBLY
5	7000-022-000	"Y" STRAINER	13	0341-100-000	WIRE CLIP
6	0152-040-000	ALLEN FLAT HEAD SCREW	14	7000-100-199	BLACK DELRIN SHAFT
7A	7000-002-001	STANDARD CHROME PLATED BRASS BUBBLER	15	7000-004-000	PUSH PAD
7B	7000-410-002	"F" OPTION FLEXIBLE BUBBLER ASSEMBLY			
8	7000-060-000	VALVE CARTRIDGE			

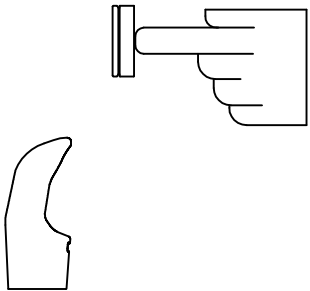

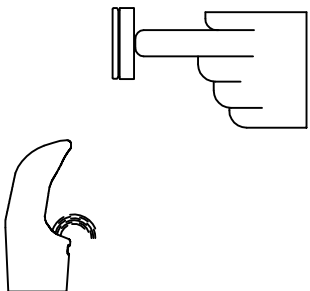
ITEM	PART NUMBER	DESCRIPTION	ITEM	PART NUMBER	DESCRIPTION
 <b>ACORN AQUA</b> P.O. Box 3527 City of Industry, CA 91744 Phone: (800) 591-9360 www.acornaqua.com		<b>TITLE PUSH PAD OPERATED 18 GAGE OVAL BOX DRINKING FOUNTAIN</b>			
<b>MANUFACTURE DATE</b> JANUARY 2006 TO PRESENT		<b>DATE ISSUED</b> 10/21/05 <b>DATE REVISED</b> 04/07/10		<b>DRAWING NUMBER</b> 9938-010-500	




**STANDARD PUSH PAD / PUSH BUTTON DRINKING FOUNTAIN**

**CONDITION:**

**SOLUTION:**

<p><b>NO WATER FLOW:</b></p> 	<ol style="list-style-type: none"> <li>1.1 Check water main supply – open.</li> <li>1.2 Inspect stop (by others) – open &amp; no debris.</li> <li>1.3 Inspect in–line strainer for debris – clean.</li> <li>1.4 Replace valve cartridge.</li> </ol>
<p><b>WATER DRIPS / WILL NOT SHUT OFF:</b></p> 	<ol style="list-style-type: none"> <li>2.1 For push pad activated drinking fountains only: Open fixture and move valve bracket assembly further back from push pad.</li> <li>2.2 Replace valve cartridge.</li> </ol>
<p><b>REDUCED WATER FLOW:</b></p> 	<ol style="list-style-type: none"> <li>3.1 Adjust the valve flow rate. See appropriate fixture installation instructions.</li> <li>3.2 Check water main supply for 20 psig minimum flow pressure.</li> <li>3.3 Inspect stop (by others) – open &amp; no debris.</li> <li>3.4 Inspect in–line strainer for debris – clean.</li> <li>3.5 Inspect bubbler for debris – clean.</li> <li>3.6 Inspect all tubing for twists or kinks.</li> <li>3.7 Replace valve cartridge.</li> </ol>

 <p><b>ACORN AQUA</b> P.O. Box 3527 City of Industry, CA 91744 Phone: (800) 591-9360 www.acornaqua.com</p>	<p>TITLE <b>DRINKING FOUNTAIN VALVE MAINTENANCE INSTRUCTIONS</b></p>		
<p>MANUFACTURE DATE <b>JANUARY 2006</b> <b>TO PRESENT</b></p>	<p>DATE ISSUED <b>09/28/05</b></p>	<p>DRAWING NUMBER <b>9940-200-001</b></p>	
<p>DATE REVISED</p>			