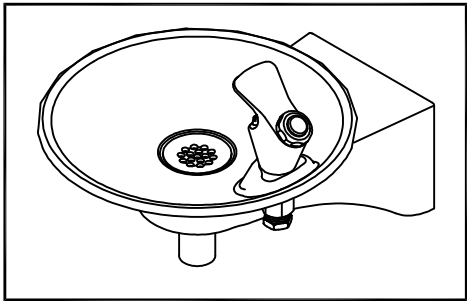
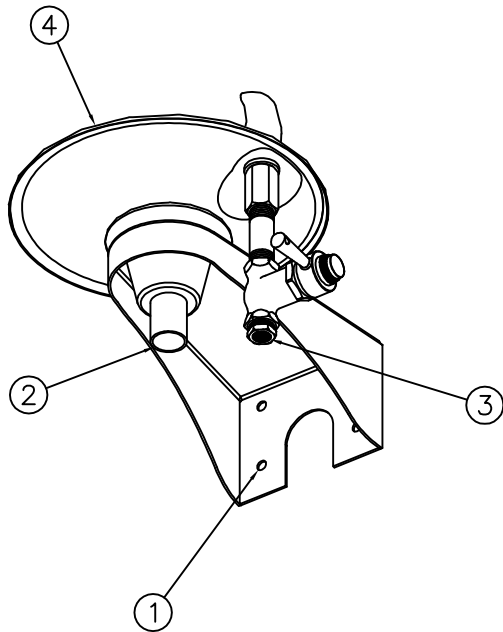
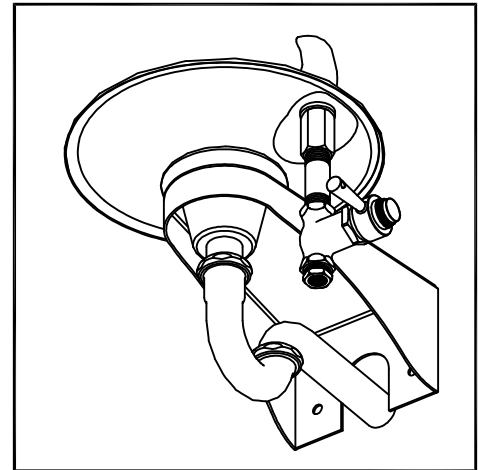


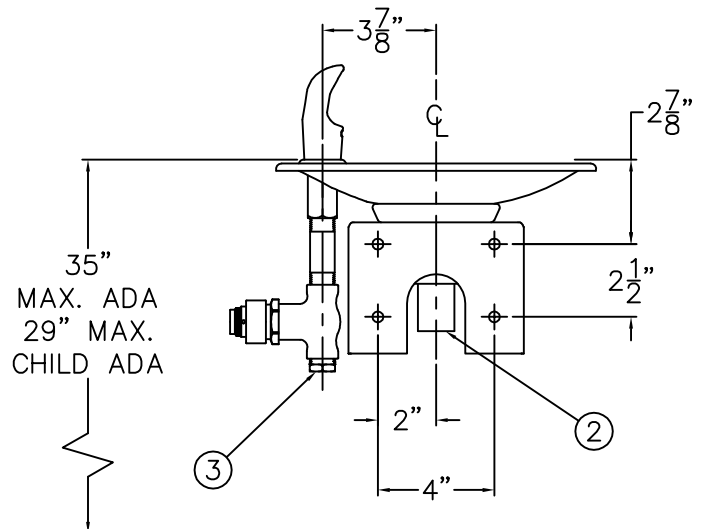
OPTIONAL PUSHBUTTON BUBBLER



OPTIONAL -PT1 1-1/4" O.D. P-TRAP



BACK ROUGH-IN VIEW

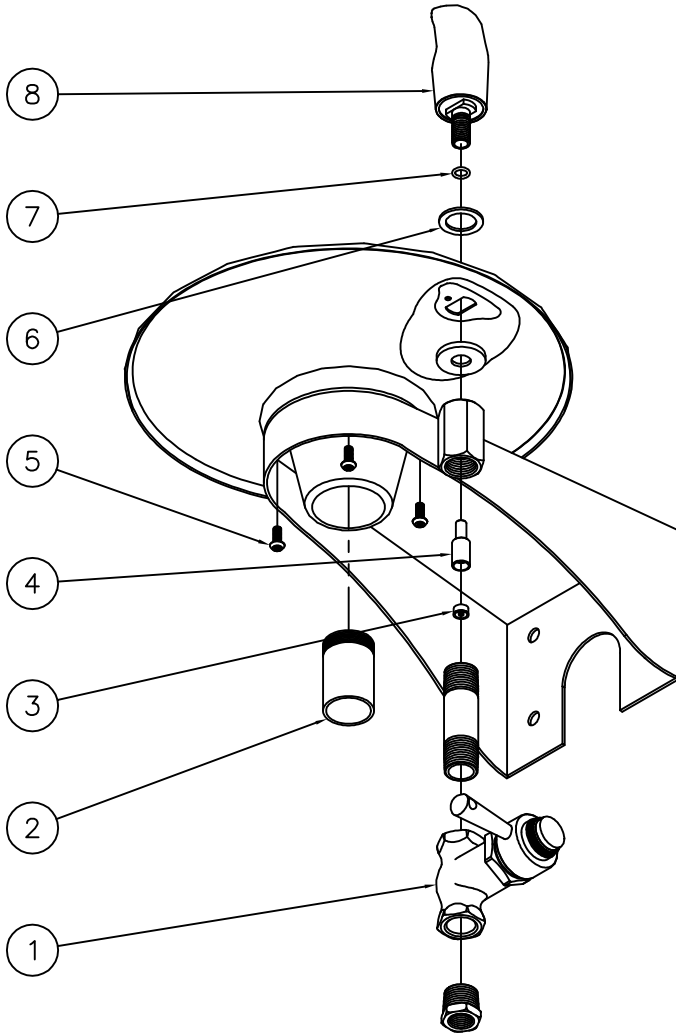


INSTALLATION INSTRUCTIONS:

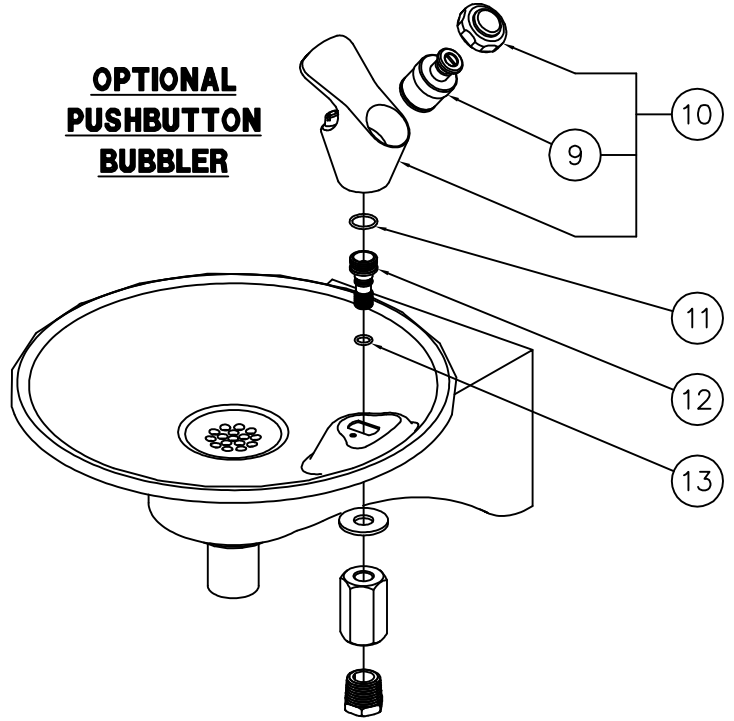
- A- STRUCTURALLY REINFORCE THE WALL BEHIND THE FOUR 3/8" DIAMETER MOUNTING HOLES ① AT THE DIMENSIONS SHOWN AND INSTALL WALL ANCHORS BY OTHERS.
- B- ROUGH-IN WASTE OUTLET FOR THE 1-1/4" OUTER DIAMETER PLAIN END TAILPIECE ②.
- C- ROUGH-IN WATER SUPPLY ③ AT DIMENSION SHOWN FOR 3/8" NPT FEMALE LEVER VALVE SUPPLY INLET. RECOMMENDED UNION AND SHUTOFF VALVE TO BE SUPPLIED BY OTHERS.
- D- CAREFULLY REMOVE FIXTURE ④ AND COMPONENTS FROM THE PACKAGING PREVENTING SCRATCHING AND DAMAGE.
- E- SECURELY ANCHOR FIXTURE ④ TO WALL THRU MOUNTING HOLES ① WITH ANCHORING HARDWARE BY OTHERS.
- G- MAKE-UP 1-1/4" O.D. WASTE CONNECTION TO TAILPIECE ②.
- H- FLUSH WATER SUPPLY ③ BY OTHERS OF ALL DEBRIS PRIOR TO CONNECTING TO FIXTURE.
- I- CONNECT THE WATER SUPPLY ③ BY OTHERS TO 3/8" NPT FEMALE INLET. STOP ON THE SUPPLY IS RECOMMENDED.

ACORN AQUA
 P.O. Box 3527 City of Industry, CA 91744
 Phone: (800) 591-9360 www.acornaqua.com

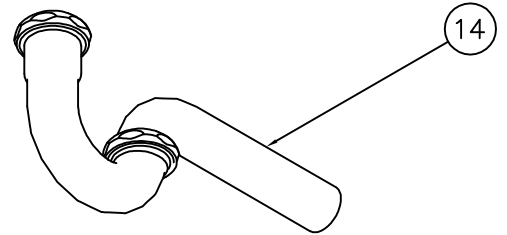
<p>TITLE ROUND BOWL WALL MOUNTED DRINKING FOUNTAIN</p>		
<p>MANUFACTURE DATE</p> <p>JANUARY 2006</p> <p>TO PRESENT</p>	<p>DATE ISSUED</p> <p>9/27/05</p> <p>DATE REVISED</p>	<p>DRAWING NUMBER</p> <p>9938-250-001</p>



**OPTIONAL
PUSHBUTTON
BUBBLER**



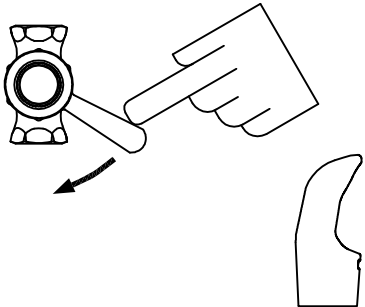

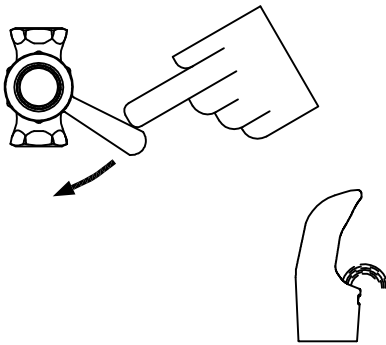
OPTIONAL -PT1 1-1/4" O.D. P-TRAP




1	7018-010-199	SELF CLOSING LEVER VALVE	8	7018-012-199	SOLID BUBBLER
2	4952-002-000	1-1/4" OUTER DIAMETER TAILPIECE	9	7000-060-000	VALVE CARTRIDGE
3	0471-010-000	FLOW REGULATOR	10	2990-010-002	DECK MOUNTED PUSHBUTTON BUBBLER
4	7018-008-199	FLOW REGULATOR ADAPTER	11	0404-015-000	O-RING
5	0112-056-000	CENTER REJECT ALLEN BUTTON HEAD SCREW	12	7018-011-199	BUBBLER ADAPTER
6	7000-007-000	BUBBLER GASKET	13	0404-011-000	O-RING
7	0404-011-000	O-RING	14	4953-002-000	1-1/4" x 1-1/4" OUTER DIAMETER P-TRAP
ITEM	PART NUMBER	DESCRIPTION	ITEM	PART NUMBER	DESCRIPTION

<p>ACORN AQUA P.O. Box 3527 City of Industry, CA 91744 Phone: (800) 591-9360 www.acornaqua.com</p>	<p>TITLE ROUND BOWL WALL MOUNTED DRINKING FOUNTAIN</p>		
	<p>MANUFACTURE DATE JANUARY 2006 TO PRESENT</p>	<p>DATE ISSUED 10/27/05</p>	<p>DRAWING NUMBER 9938-250-500</p>
		<p>DATE REVISED 01/05/07</p>	

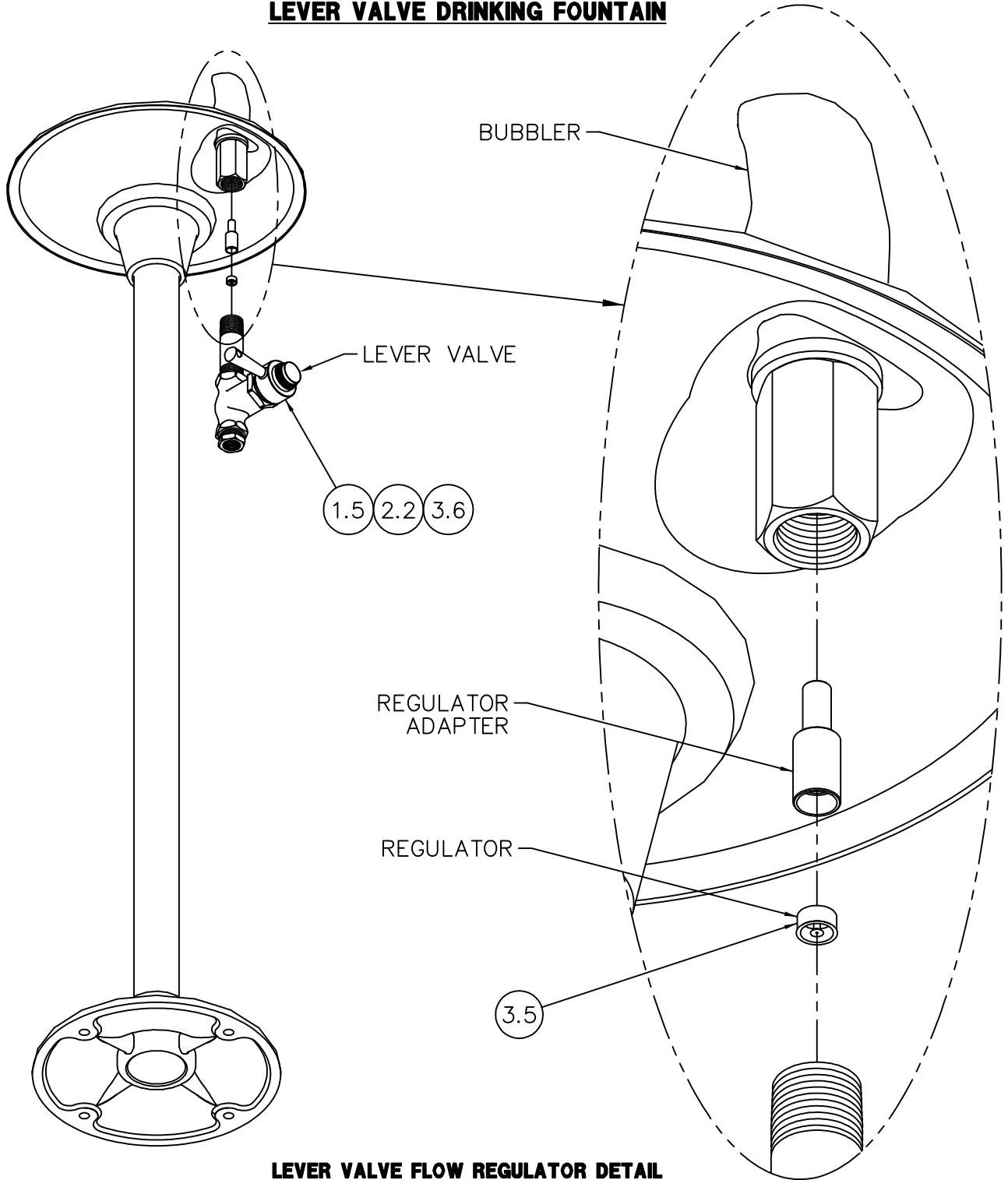
LEVER VALVE DRINKING FOUNTAIN

CONDITION:	SOLUTION:
<p>NO WATER FLOW:</p> 	<ul style="list-style-type: none"> 1.1 Check water main supply – open. 1.2 Inspect stop (by others) – open & no debris. 1.3 Inspect strainer (by others) for debris – clean. 1.4 Inspect flow regulator for debris – clean or replace. 1.5 Replace lever valve.
<p>WATER DRIPS / WILL NOT SHUT OFF:</p> 	<ul style="list-style-type: none"> 2.1 Inspect lever valve for debris – clean. 2.2 Replace lever valve.
<p>REDUCED WATER FLOW:</p> 	<ul style="list-style-type: none"> 3.1 Check water main supply for 20 psig minimum flow pressure. 3.2 Inspect stop (by others) – open & no debris. 3.3 Inspect strainer (by others) for debris – clean. 3.4 Inspect bubbler for debris – clean. 3.5 Inspect flow regulator for debris – clean or replace. 3.6 Replace lever valve.

Refer to drawing #9940-206-001 for Lever Valve Maintenance Detail to locate solutions above.

 <p>ACORN AQUA P.O. Box 3527 City of Industry, CA 91744 Phone: (800) 591-9360 www.acornaqua.com</p>	<p>TITLE LEVER DRINKING FOUNTAIN VALVE MAINTENANCE INSTRUCTIONS</p>		
	<p>MANUFACTURE DATE JANUARY 2006 TO PRESENT</p>	<p>DATE ISSUED 10/27/05</p> <p>DATE REVISED 01/17/06</p>	<p>DRAWING NUMBER 9940-205-001</p>

LEVER VALVE DRINKING FOUNTAIN



LEVER VALVE FLOW REGULATOR DETAIL

Refer to drawing #9940-205-001 for Valve Maintenance Instructions numbered solutions detailed above.



ACORN AQUA
P.O. Box 3527 City of Industry, CA 91744
Phone: (800) 591-9360 www.acornaqua.com

<p>TITLE LEVER VALVE MAINTENANCE INSTRUCTIONS</p>		
<p>MANUFACTURE DATE JANUARY 2006 TO PRESENT</p>	<p>DATE ISSUED 10/27/05</p>	<p>DRAWING NUMBER 9940-206-001</p>
	<p>DATE REVISED 01/17/06</p>	