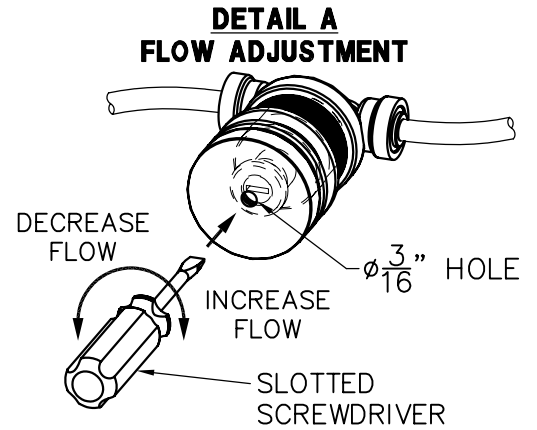
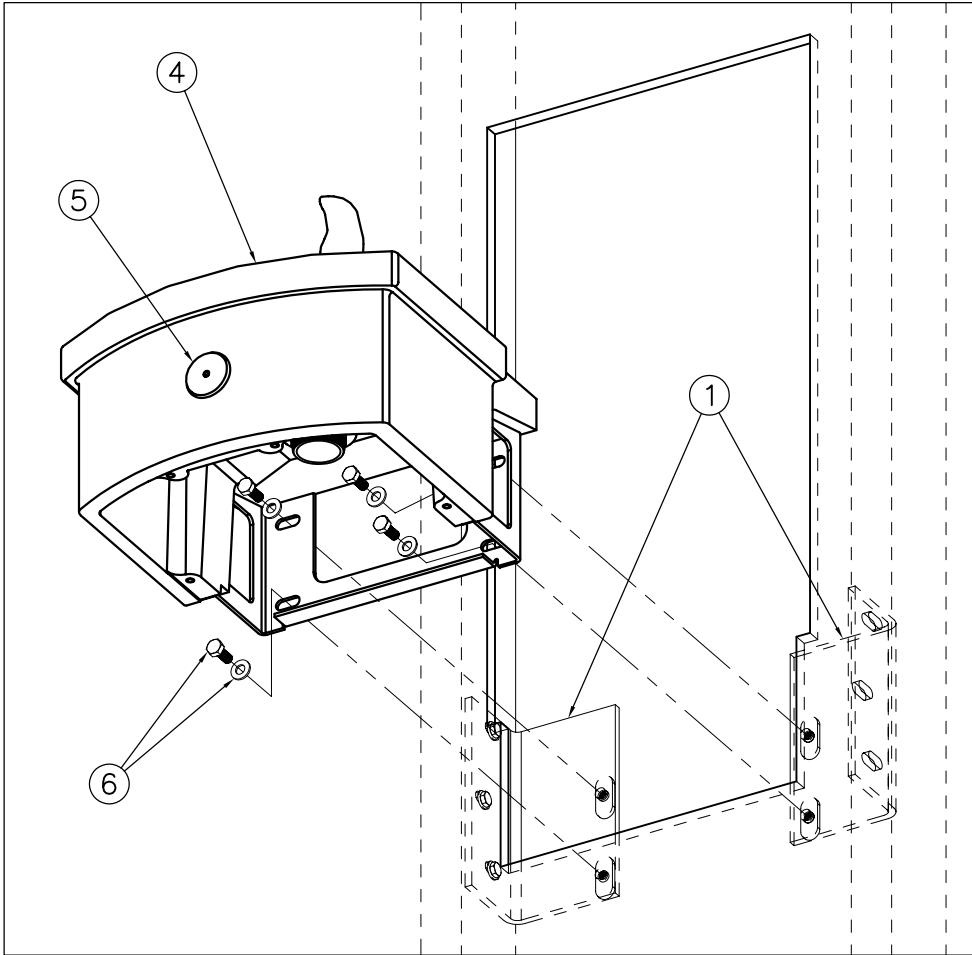


**INSTALLATION INSTRUCTIONS:**

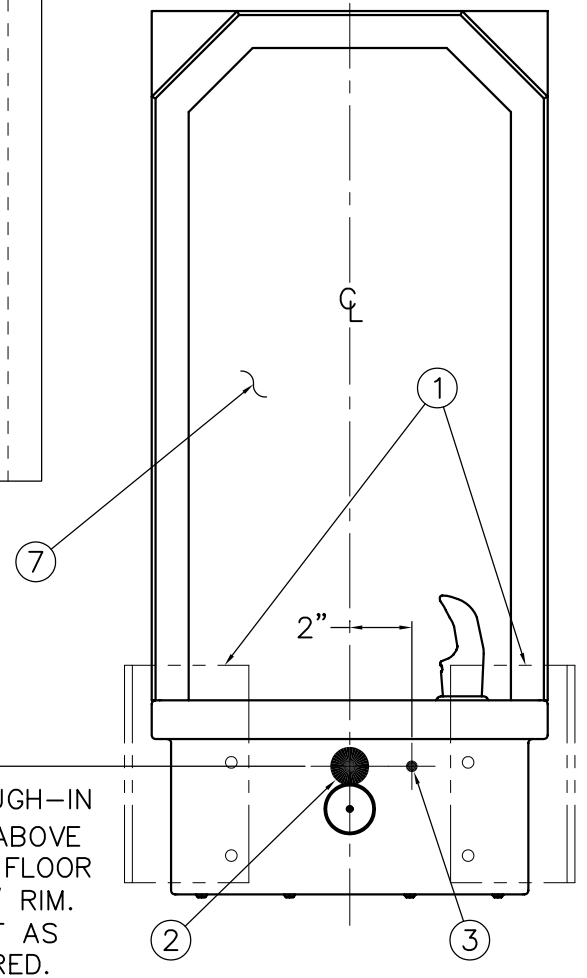
- A- PROVIDE 16" CENTER-TO-CENTER WALL STUDS WHERE THE DRINKING FOUNTAIN WILL BE CENTERED BETWEEN THEM AND PROVIDE WALL CUTOUT. MAKE SURE CUTOUT IS PLUMB AND LEVEL. NOTE: A PAPER WALL CUTOUT TEMPLATE IS PROVIDED TO ASSIST WITH CREATING CUTOUT.
- B- USE METAL BRACKET LOCATING TEMPLATE (1) TO MARK THE REQUIRED HOLE LOCATIONS ON THE WALL STUDS. THE METAL TEMPLATE IS PLACED AGAINST INSIDE WALL FACE, UP TO THE WALL STUD, AT THE BOTTOM OF THE 11" WIDE PORTION OF THE CUTOUT AS SHOWN.

- C- NOTE: THE SAME TEMPLATE (1) IS USED ON BOTH SIDES WITH THREE HOLES ON EACH SIDE. ON LEFT SIDE: MARK HOLES (2) INDICATED ON METAL TEMPLATE (1) WITH " L ↑ " ETCHING. ON RIGHT SIDE: MARK HOLES (3) INDICATED ON METAL TEMPLATE (1) WITH " ↑ R " ETCHING.
- D- DRILL PILOT HOLES AT SIX MARKED LOCATIONS FOR 1/4" OR 5/16" ANCHORING LAG SCREWS (WITH WASHERS) BY OTHERS.
- E- LOOSELY ASSEMBLE MOUNTING ANGLE BRACKETS (4) TO THE WALL STUDS ON BOTH SIDES. MAKE SURE THE TWO HOLES IN THE BACK ARE AT THE BOTTOM OF BRACKETS AS SHOWN. DO NOT TIGHTEN ANCHORING HARDWARE, SO THAT MINOR ADJUSTMENTS CAN BE MADE DURING FOUNTAIN ASSEMBLY.
- F- REFERENCE DRAWING # 9938-033-001 FOR THE REMAINING STEPS TO COMPLETE FIXTURE INSTALLATION.

<p><b>ACORN AQUA</b> P.O. Box 3527 City of Industry, CA 91744 Phone: (800) 591-9360 www.acornaqua.com</p>	<p>TITLE <b>SOLID SURFACE HISTORICAL WALL MOUNTED DRINKING FOUNTAIN</b></p>		
	<p>MANUFACTURE DATE</p> <p><b>JANUARY 2006</b></p> <p><b>TO PRESENT</b></p>	<p>DATE ISSUED</p> <p><b>03/09/06</b></p> <p>DATE REVISED</p>	<p>DRAWING NUMBER</p> <p><b>9938-032-001</b></p>



FRONT ROUGH-IN VIEW



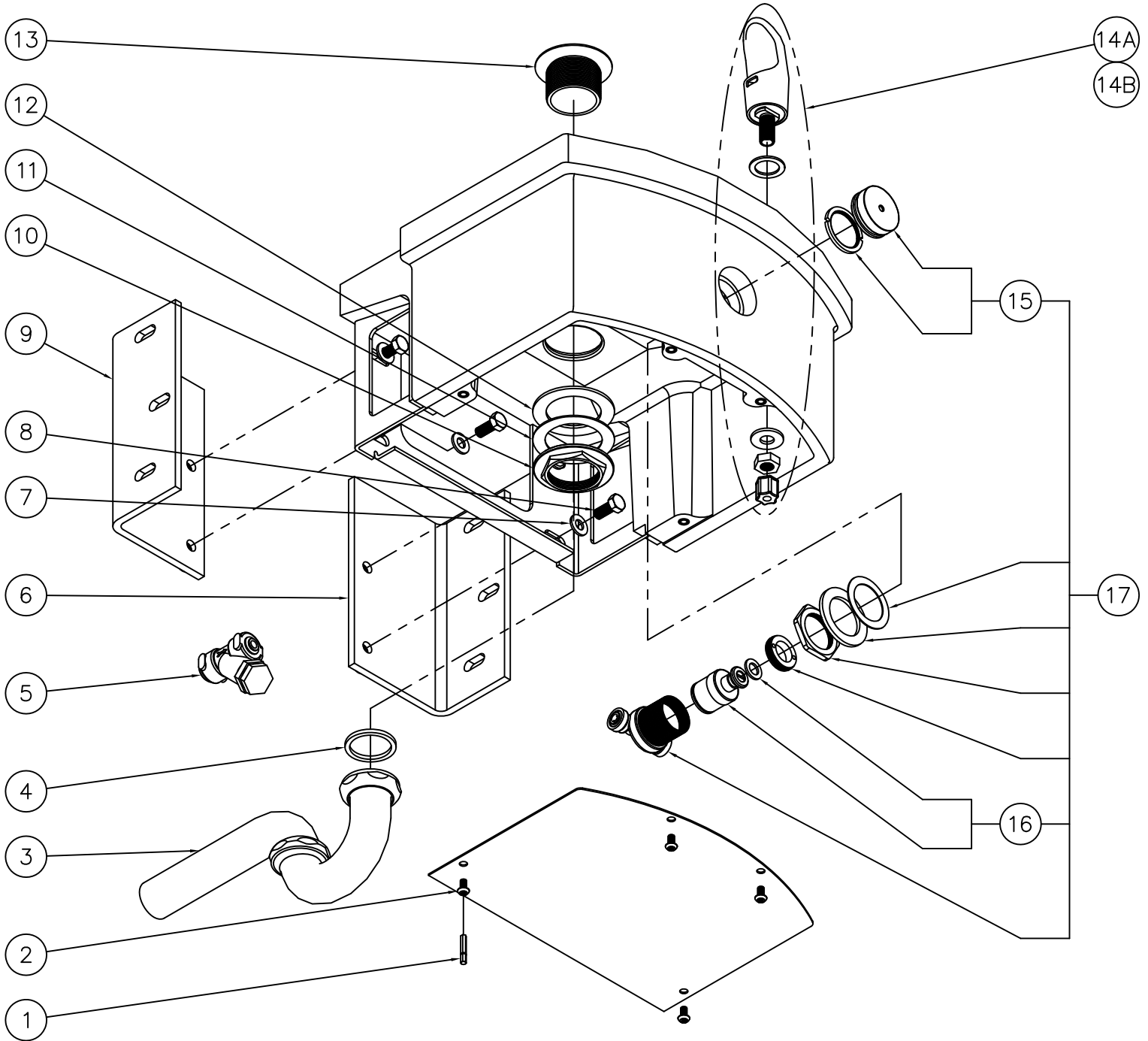
**INSTALLATION INSTRUCTIONS:**

- A- REFER TO DRAWING # 9938-032-001 TO WALL CUTOUT AND INSTALL MOUNTING ANGLE BRACKETS (1).
- B- ROUGH-IN WASTE OUTLET (2) AT DIMENSION SHOWN FOR 1-1/4" OUTER DIAMETER PLAIN END P-TRAP.
- C- ROUGH-IN WATER SUPPLY (3) AT DIMENSION SHOWN FOR THE 1/4" NOMINAL (3/8" O.D.) x 4" LONG COPPER TUBE CONNECTED TO THE IN-LINE STRAINER PROVIDED. THE STOP RECOMMENDED ON SUPPLY IS TO BE SUPPLIED BY OTHERS.
- D- CAREFULLY REMOVE FOUNTAIN (4) AND COMPONENTS FROM THE PACKAGING PREVENTING SCRATCHING AND DAMAGE.
- E- REMOVE BOTTOM ACCESS PANEL. ENSURE PUSHBUTTON (5) AND BUBBLER ARE SECURE. CHECK ALL TUBING CONNECTIONS TO MAKE SURE THEY DID NOT COME LOOSE IN SHIPMENT.
- F- SET FOUNTAIN (4) IN BOTTOM OF CUTOUT. ASSEMBLE TO BRACKETS (1) WITH BOLTS AND WASHERS (6). PRESSING THE FOUNTAIN (4) FIRMLY AGAINST FINISHED WALL FACE, TIGHTEN LAG SCREWS SECURING BRACKETS (1) TO WALL STUDS.
- G- INSTALL P-TRAP & MAKE-UP 1-1/4" O.D. WASTE CONNECTION.
- H- FLUSH WATER SUPPLY (3) OF ALL DEBRIS. CONNECT TO 1/4" NOMINAL COPPER TUBE INLET. SUPPLY STOP RECOMMENDED.
- I- TEST BUBBLER OPERATION PRESSING BUTTON (5). ADJUST FLOW RATE AS REQUIRED. SEE DETAIL A. CHECK CONNECTIONS AND WASTE PIPING FOR LEAKS. CORRECT IF PRESENT.

37 7/8" ROUGH-IN HEIGHT ABOVE FINISHED FLOOR FOR 40" RIM. ADJUST AS REQUIRED.

- J- RE-INSTALL BOTTOM ACCESS PANEL.
- K- DRY FIT RECESSING WALL CABINET (7) TO VERIFY CUTOUT. CAULK SURFACES BETWEEN FOUNTAIN (4) AND CABINET (7). USE ADHESIVE CAULKING ON BACK OF CABINET TOP & SIDE FLANGES AND RECESS TO CONTACT FINISHED WALL FACE.

<p><b>ACORN AQUA</b> P.O. Box 3527 City of Industry, CA 91744 Phone: (800) 591-9360 www.acornaqua.com</p>	<p>TITLE <b>SOLID SURFACE HISTORICAL WALL MOUNTED DRINKING FOUNTAIN</b></p>		
	<p>MANUFACTURE DATE</p> <p><b>JANUARY 2006</b></p> <p><b>TO PRESENT</b></p>	<p>DATE ISSUED</p> <p><b>03/10/06</b></p>	<p>DRAWING NUMBER</p> <p><b>9938-033-001</b></p>
		<p>DATE REVISED</p>	



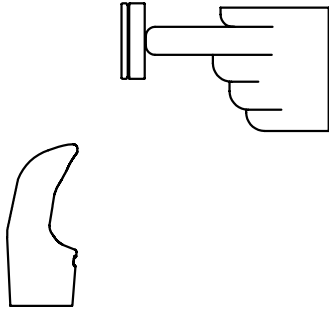
1	0296-025-199	CENTER REJECT HEX DRIVER BIT	10	7000-020-199	1-1/4" NPSM FLANGE NUT
2	0112-056-000	CENTER REJECT ALLEN BUTTON HD SCREW	11	0411-025-000	FIBER GASKET
3	7000-015-000	1-1/4" OUTER DIAMETER P-TRAP	12	0431-223-000	RUBBER GASKET
4	0430-003-000	NEOPRENE GASKET	13	7000-018-199	1-1/4" NPSM GRID STRAINER
5	7000-022-000	"V" STRAINER	14A	7000-003-001	STANDARD CHROME PLATED BRASS BUBBLER
6	7017-009-001	RIGHT HISTORICAL MOUNTING ANGLE ASSY	14B	7000-412-002	"F" OPTION FLEXIBLE BUBBLER ASSEMBLY
7	0332-006-000	WASHER	15	7000-068-001	RETAINING RING & BUTTON ASSEMBLY
8	0207-003-000	5/16"-18 x 3/4" HEX HD MACHINE SCREW	16	7000-069-001	VALVE CARTRIDGE WITH FOAM WASHER
9	7017-008-001	LEFT HISTORICAL MOUNTING ANGLE ASSY	17	7000-065-001	RECESSED PUSHBUTTON VALVE ASSEMBLY
ITEM	PART NUMBER	DESCRIPTION	ITEM	PART NUMBER	DESCRIPTION

**STANDARD PUSH PAD / PUSH BUTTON DRINKING FOUNTAIN**

**CONDITION:**

**SOLUTION:**

**NO WATER FLOW:**



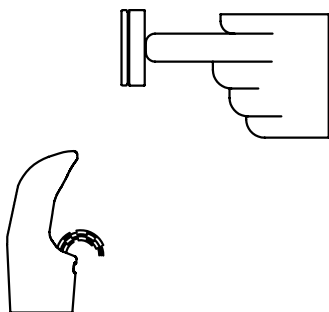
- 1.1 Check water main supply – open.
- 1.2 Inspect stop (by others) – open & no debris.
- 1.3 Inspect in–line strainer for debris – clean.
- 1.4 Replace valve cartridge.

**WATER DRIPS / WILL NOT SHUT OFF:**



- 2.1 For push pad activated drinking fountains only: Open fixture and move valve bracket assembly further back from push pad.
- 2.2 Replace valve cartridge.

**REDUCED WATER FLOW:**



- 3.1 Adjust the valve flow rate. See appropriate fixture installation instructions.
- 3.2 Check water main supply for 20 psig minimum flow pressure.
- 3.3 Inspect stop (by others) – open & no debris.
- 3.4 Inspect in–line strainer for debris – clean.
- 3.5 Inspect bubbler for debris – clean.
- 3.6 Inspect all tubing for twists or kinks.
- 3.7 Replace valve cartridge.