



MODEL OVL-II™ SEBP FR

Barrier-Free Fountain



This fountain is certified to NSF/ANSI 61.

GENERAL

Two oval shape fountains, one-piece, non-corrosive stainless steel with brushed satin finish. Contour-formed basins with rounded corners and edges reduces splatter, insures proper drainage and prevents standing waste water. Oval fountain shape requires less neck extension and bending for the wheel chair user. Designed to be easily accessible to both physically challenged and able-bodied individuals. Ideally suited for installation in public areas. Model meets state and federal requirements as defined by the Americans with Disabilities Act.

FREEZE-RESISTANT VALVE SYSTEM

Freeze-resistant system features box that installs behind non-freezing wall for housing water connection from the stop to the strainer.

BUBBLER

Exclusive one-piece, chrome-plated two-stream mound-building bubblers with non-removable anti-squirt feature and integral hood insures a satisfying drink of water.

PUSHBUTTON ACTUATION MECHANISM

Self-closing, vandal-resistant pushbutton does not require grasping or twisting.

PANEL

Constructed of stainless steel, number 300 series with satin finish.

AUTOMATIC STREAM HEIGHT REGULATOR

Self-closing assembly is located inside unit to prevent tampering. Unit resists corrosion and liming. A constant stream height is automatically maintained under line pressures that vary from 20 to 105 psi.

INLET STRAINER

Easily cleaned in-line strainer screen traps particles of 140 microns or larger before they enter the waterway.

WATER INLET

3/8" O.D. Tubing into freeze-resistant box.

DRAIN OUTLET

1-1/4" waste outlet located in freeze-resistant valve system.

SUGGESTED SPECIFICATIONS

Both fountains shall include pushbuttons on the front. Both shall include contour-formed basins to eliminate splashing and standing water, and shall have rounded corners and edges. Each projector shall be two-stream, mound-building type with integral hood guard and anti-squirt feature. Fountain shall comply with ANSI 117:1 and ADA for visual and motion disabilities. The manufacturer shall certify the unit to meet the requirements of NSF/ANSI 61, and the Safe Drinking Water Act.

Note: Continued product improvement makes specifications subject to change without notice. See Halsey Taylor website for most current spec sheet.



Standard Finish is Stainless Steel

Optional Accessories (extra cost)

Vandal-Resistant Kit

Each OVL-II™ SEBP FR consists of 2 cartons of the following:

Fountain, Panel and Misc. Parts
Freeze-Resistant Valve System

Service stop not included.

Copper tube to water supply connection not furnished

Shipping weight: 97 lbs.

JOB NAME: _____

 ENGINEER/CONTRACTOR NAME:

 APPROVAL: _____
 DATE: _____



OVL-II™ SEBP FR

Freeze-Resistant OVL-II™ Barrier-Free Bi-Level Fountain

(CONTINUED)

MOUNTING INSTRUCTIONS

Refer to diagrams for rough-in of freeze-resistant system and plumbing. Mount wall plate assembly to wall per the installation instructions. Hang fountain panel over the wall plate assembly. Attach fountains to wall plate assembly. Water service line and waste line are to be assembled as required. Final check for leaks and correct functions of fountain should be made. (For details see the installation instructions.)

Freeze resistant box must be installed on interior non-freezing wall.

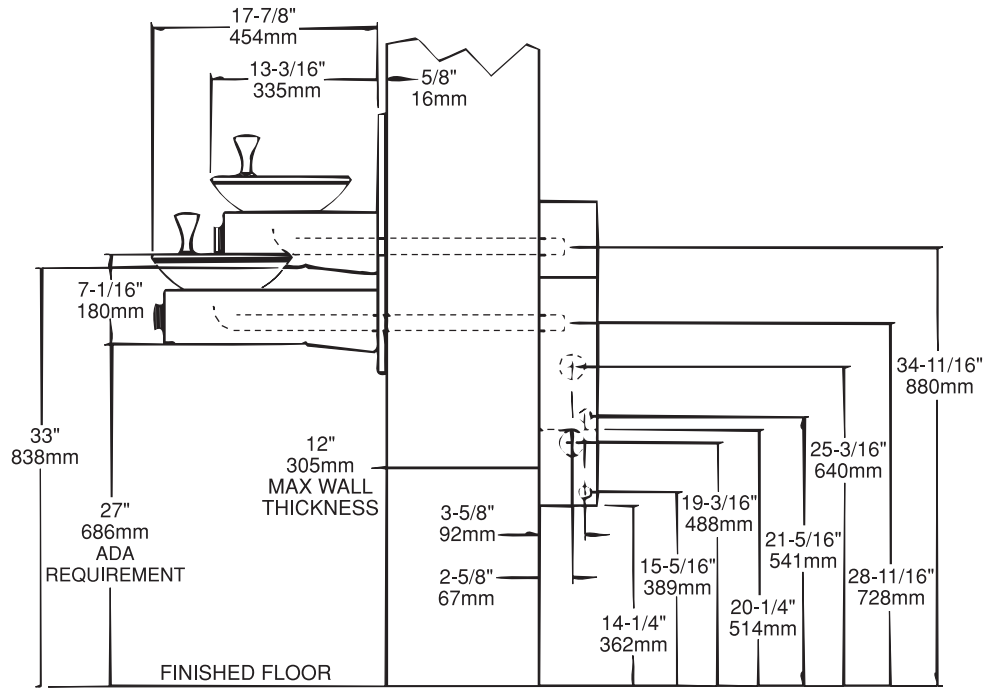
CAUTION – Fountain must be securely bolted to wall.

For wall support required locations see installation instructions provided with panel and fountains.

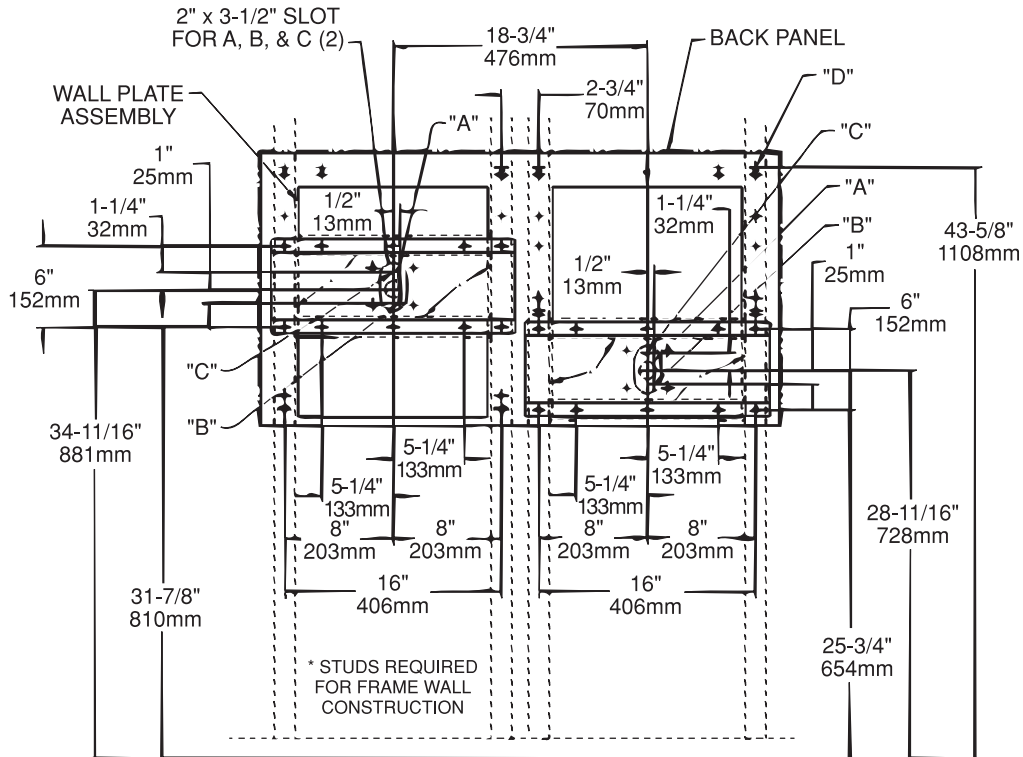
OPERATING PRESSURES:

Supply water - 105 psi maximum

SIDE VIEW



WALL LAYOUT



LEGEND:

A = 1-3/4" HOLE FOR 1-1/4" O.D. WASTE TUBE (TRAP AND ELBOW PROVIDED)

B = 7/8" HOLE FOR 1/4" O.D. FREEZE-RESISTANT CABLE

C = 7/8" HOLE FOR 1/4" O.D. PLASTIC TUBE (BUBBLER WATER SUPPLY)

D = 1/4" (6mm) DIA. HOLES FOR MOUNTING PLATE TO WALL

NOTE: A service supply stop (not included) must be installed at the fountain inlet line.

*ADA Requirement

Halsey Taylor®